

Recombinant CD8a/Lyt2 Monoclonal Antibody

catalog number: AN300002P

Note: Centrifuge before opening to ensure complete recovery of vial contents.

Description

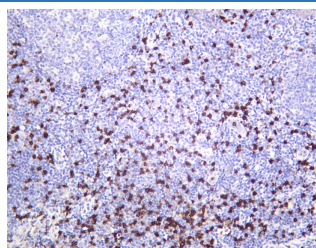
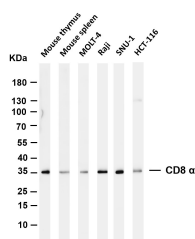
Reactivity	Human;Mouse;Rat
Immunogen	Recombinant Human CD8a / Lyt2 protein
Host	Rabbit
Isotype	IgG
Clone	A1112
Purification	Protein A
Buffer	0.2 µm filtered solution in PBS

Applications

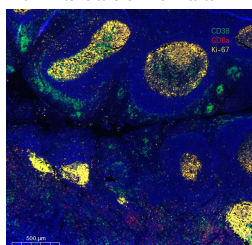
Recommended Dilution

IHC	1:200-1000
WB	1:1000-5000
IF	1:200-1000
ELISA	1:5000-20000

Data



Various whole cell lysates were separated by 4-20% SDS-PAGE, and the membrane was blotted with anti-CD8 α antibody. The HRP-conjugated Goat anti-Rabbit IgG (H + L) antibody was used to detect the antibody. Lane 1: Mouse thymus Lane 2: Mouse spleen Lane 3: MOLT-4 Lane 4: Raji Lane 5: SNU-1 Lane 6: HCT-116 Predicted band size: 26kDa Observed band size: 35kDa



For Research Use Only

Toll-free: 1-888-852-8623
Web: www.elabscience.com

Tel: 1-832-243-6086
Email: techsupport@elabscience.com

Fax: 1-832-243-6017

Rev. V1.4

Fluorescence multiplex immunohistochemical analysis of human tonsil tissue (formalin-fixed paraffin-embedded section). The immunostaining was performed by Sextuple-Fluorescence kit .CD8 α rabbit mAb (RED) and CD38 mouse mAb (GREEN) and Ki67 rabbit mAb (YELLOW) was tested with different TSA Fluorescence reagent. Microscopy and pseudocoloring of individual dyes was performed using a Slideviewer Imaging System (Excilone).

Preparation & Storage

Storage	Store at -20°C Valid for 12 months. Avoid freeze / thaw cycles.
Shipping	Ice bag

Background

The CD8 antigen is a cell surface glycoprotein found on most cytotoxic T lymphocytes that mediates efficient cell-cell interactions within the immune system. The CD8 antigen acts as a coreceptor with the T-cell receptor on the T lymphocyte to recognize antigens displayed by an antigen presenting cell in the context of class I MHC molecules. The coreceptor functions as either a homodimer composed of two alpha chains or as a heterodimer composed of one alpha and one beta chain. Both alpha and beta chains share significant homology to immunoglobulin variable light chains. This gene encodes the CD8 alpha chain. Multiple transcript variants encoding different isoforms have been found for this gene. [provided by RefSeq, Nov 2011]